



# UNIVERSITIES NETWORK



**President Université Grenoble Alpes**  
**Principal Investigator IDEX**  
**(President ComUE, ....)**  
*Board EUA*  
**Medical doctor**



**Secretary general AURORA**  
**Director Mastermind Europe**  
**(37 years in international education)**  
**Lisbon Recognition Convention**  
**Historian**



# How it started



Similarity

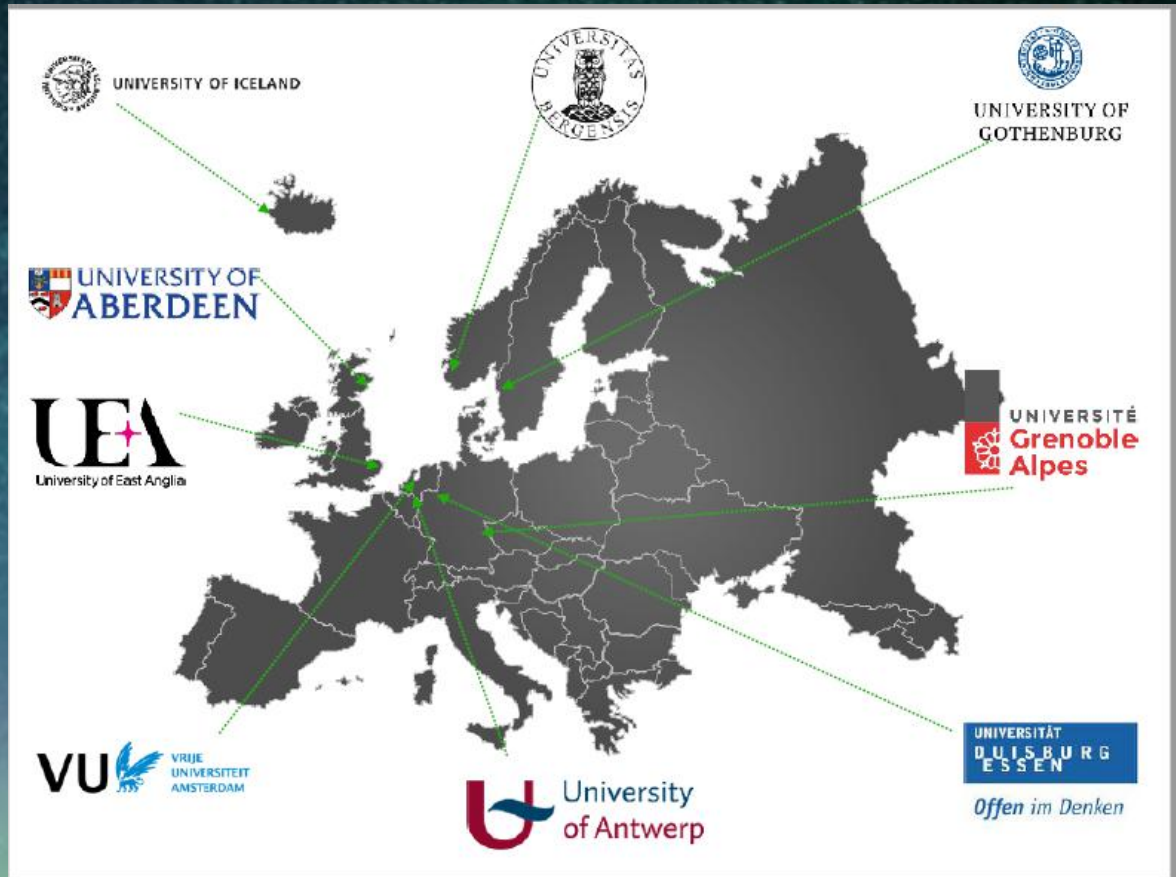
Trust

Relevance

Excellence

# AURORA

## Who we are



AURORA total	Number of students (ca)	Number of papers (ca)	Papers in top 10%	Average FWCI
	230 000	200 225	22,68%	1,81

# What we do

## 4 key priorities



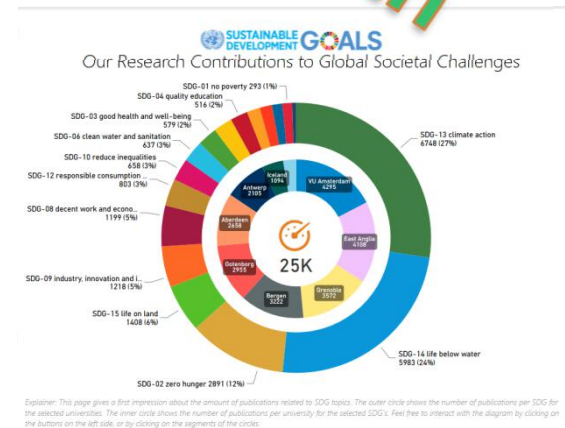
Inclusive  
Internationalisation

Student  
mental health

SDG web lectures

Doctoral mobility  
Students' newsletter  
Directors Library  
eAssessment  
EU Grant offices  
Student sports event  
Open Educational Resources  
Teaching culture and skills  
Collaborative online learning  
Connecting pedagogic research

.....



# *How we work*

- Association
- Biannual meetings (presidents, projects, workers)
- Vice rectors Education & Research
- 2 \* 9 supported groups
- Amsterdam as easy-to-meet hub
- Aurora office

# *Looking back and ahead*

- Intensive!
- Strategic recalibration
- High trust as key value
- Can all keep up?
- Aurora  $\leftrightarrow$  “Macron”?



# Aurora & Latin America?

- Membership focus
- Aurora – Latin America
  - Likeminded
  - High trust
  - Clear focus
- We will gladly help!



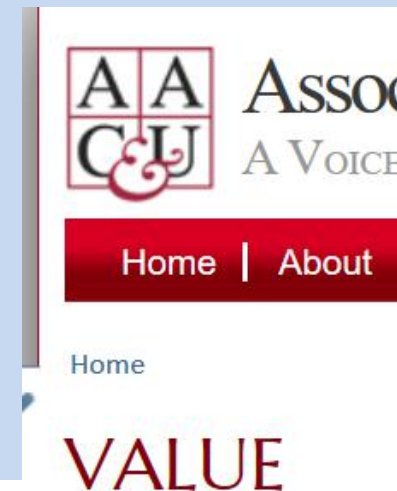
# *Some notes UGA*

# Mastermind Europe



- ❑ “Learning Incomes”
- ❑ Coherent Admission Framework
- ❑ VALUE Rubrics
- ❑ “Desired Student” profile
- ❑ Benefits

How do you a) know (assessment mechanisms): b) if students are good enough (norms/levels), c) in the things that they need to be good at (criteria). Turned around in logical order: 1) Criteria, 2) Norms/levels, 3) Assessment mechanisms			
	1 Criteria	2 Norms / levels	3 Assessment mechanisms (and scores)
In plain language:	What you are looking for		What you are looking at
Subject-Related Knowledge & Skills			
General Academic Competencies			
Personal Competencies & Traits			
Language competence			



VALUE

What is VALUE?

mastermind EUROPE

Master's admission  
for a diverse international classroom