

Brazilian Universities and Rankings

What is going on?

Leandro R. Tessler
IFGW
Unicamp

Rankings

- Bringing controversy to higher education since 2003
- Why rankings?
- Different rankings, different criteria
 - ARWU or Shanghai
 - Times Higher Education
 - QS Top Universities

DISCLAIMER

QS Advisory Board

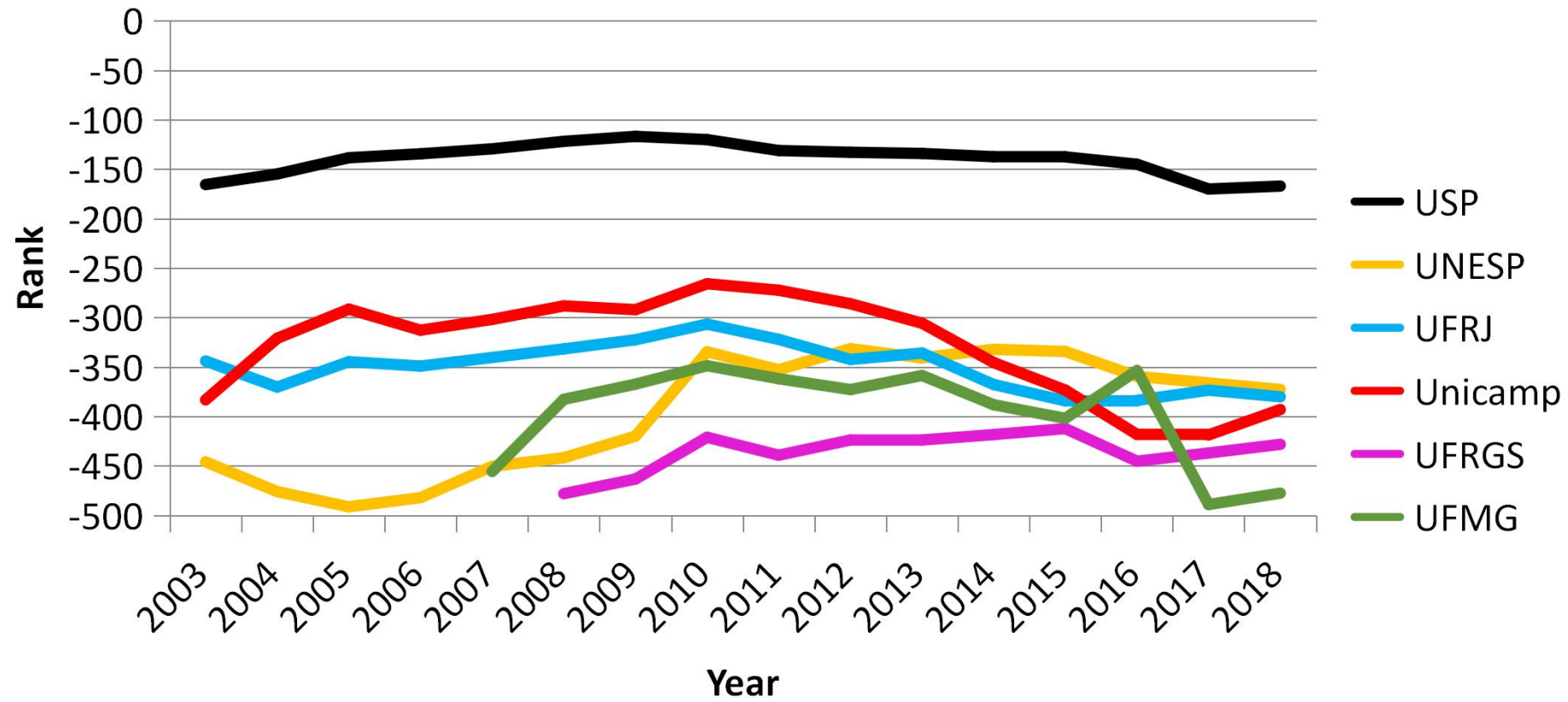
The board exists to advise QS on any aspect of university rankings, including the methods used to produce them, possible new rankings, and the effect and impact of rankings around the world.

- Teng Jin-Guang, Chair Professor of Structural Engineering, Hong Kong Polytechnic University, Hong Kong
- Leandro Tessler, Former Director of International Relations, Unicamp, Brazil
- Paul Thurman, Clinical Professor, Columbia University, Mailman School for Public Health, and School of International and Public Affairs, United States
- Tsui Lap-Chee, Geneticist and Former President Vice-Chancellor of the University of Hong Kong, Hong Kong

ARWU: Shanghai Ranking

- Six objective research indicators
 - number of alumni and staff winning Nobel Prizes and Fields Medals
 - number of highly cited researchers selected by Clarivate Analytics
 - number of articles published in journals Nature and Science
 - number of articles indexed in Science Citation Index - Expanded and Social Sciences Citation Index
 - per capita performance of a university.
- Criticism
 - Research bias
 - English language bias
 - Size bias

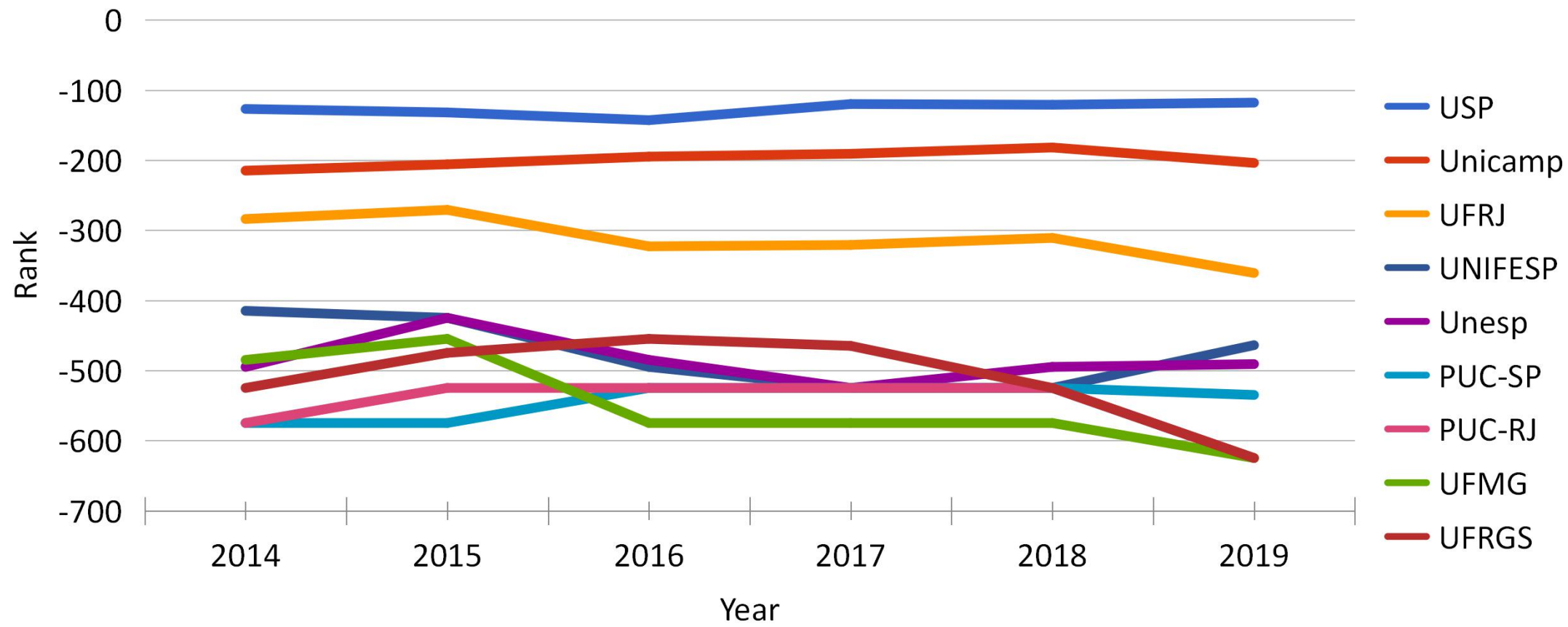
ARWU



QS

- Six performance indicators
 - academic reputation (40%)
 - employer reputation (10%)
 - student-to-faculty ratio (20%)
 - research citations per faculty member (20%)
 - proportion of international faculty (5%)
 - proportion of international students (5%)
- Criticism
 - 50% is subjective
 - Relies on information provided by the institutions

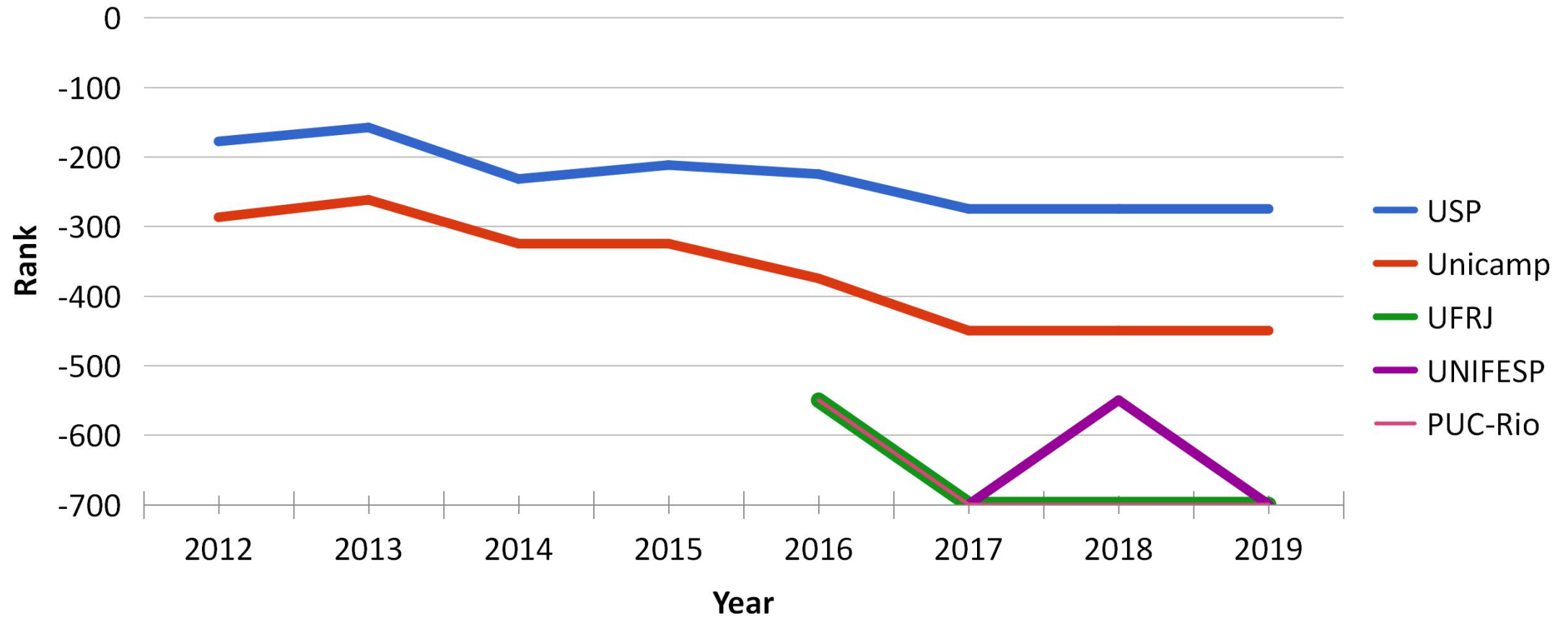
QS



Times Higher Education

- Thirteen indicators
 - Reputation survey (teaching): 15%
 - Staff-to-student ratio: 4.5%
 - Doctorate-to-bachelor's ratio: 2.25%
 - Doctorates-awarded-to-academic-staff ratio: 6%
 - Institutional income: 2.25%
 - Reputation survey (research): 18%
 - Research income: 6%
 - Research productivity: 6%
 - Citations: 30%
 - Proportion of international students: 2.5%
 - Proportion of international staff: 2.5%
 - International collaboration: 2.5%
 - Industry income: 2.5%
- Criticism
 - Complicated
 - 33% subjective
 - Size matters

THE



General trend

- No Brazilian university in the top 100 in any ranking
- Research and best education is in public universities
- ARWU
 - Only 6 Brazilian universities in the top 500
- QS
 - Only 5 Brazilian universities in the top 500
- THE
 - Only 2 Brazilian universities in the top 500
- Brazilian universities are decreasing in all rankings since 2012/13

Why?

- English language
 - No programs in English
 - Almost no courses in English
 - Low publication rates in English
 - If you are known locally only, reputation indicators are low
- Limited attractiveness for international students
 - Curricula not compatible with contemporary trends
 - Very limited information in English
- International competition
 - Other emerging countries adopted strategies to deliver high quality education
- Brazilian culture: regulations everywhere
 - Admissions
 - Curricula

Outlook

- CAPES PrInt program
 - What to expect?
- Research budget cuts announced
- Curricula tend to remain outdated and classroom based
 - Important exception: UFABC
- Project to increase the number of Brazilian universities in the top 500 and perhaps have some in the top 100 in the early 2010s
 - Research only
 - Federal system only
 - Discontinued before launch

THE Impact Ranking 2019

- United Nations' Sustainable Development Goals (SDGs)

101-200	UFABC
101-200	UFC
101-200	Unifesp
101-200	Nove de Julho University
201-300	UEL
301+	10 Institutions

- Not the usual suspects!

Underdevelopment cannot be
improvised.
It is a work of centuries.

Nelson Rodrigues
Brazilian writer (1912-1980)

Thank you!

tessler@ifi.unicamp.br